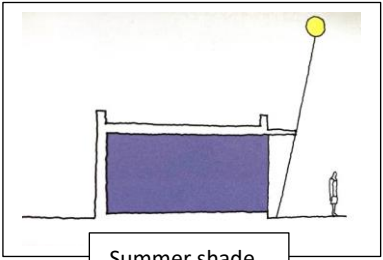


## RIBA Climate Challenge 2030

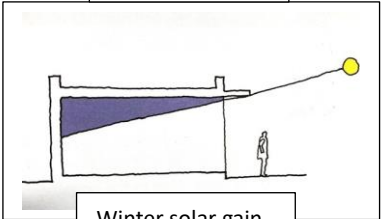
Stolwood Architects are registered with the RIBA Climate Challenge to help address the global climate crisis. Achieved by using natural materials, planting, super insulated and energy efficient design. Providing cost saving, health benefits and net zero goals.

We apply these principles to all our designs appropriately to suit the client's needs and site conditions. Aligning with the planning requirements for climate change adaptations and building regulations updates.

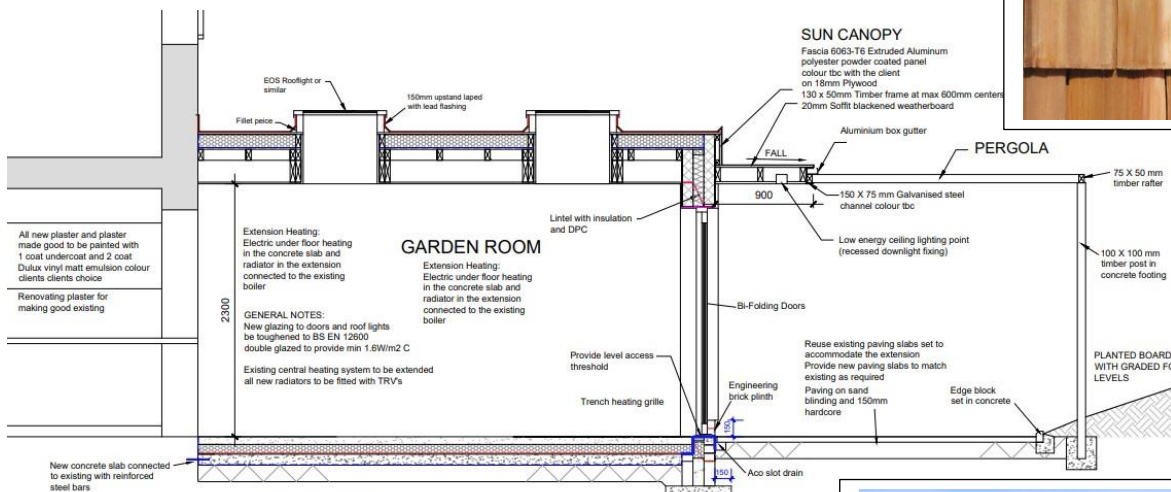
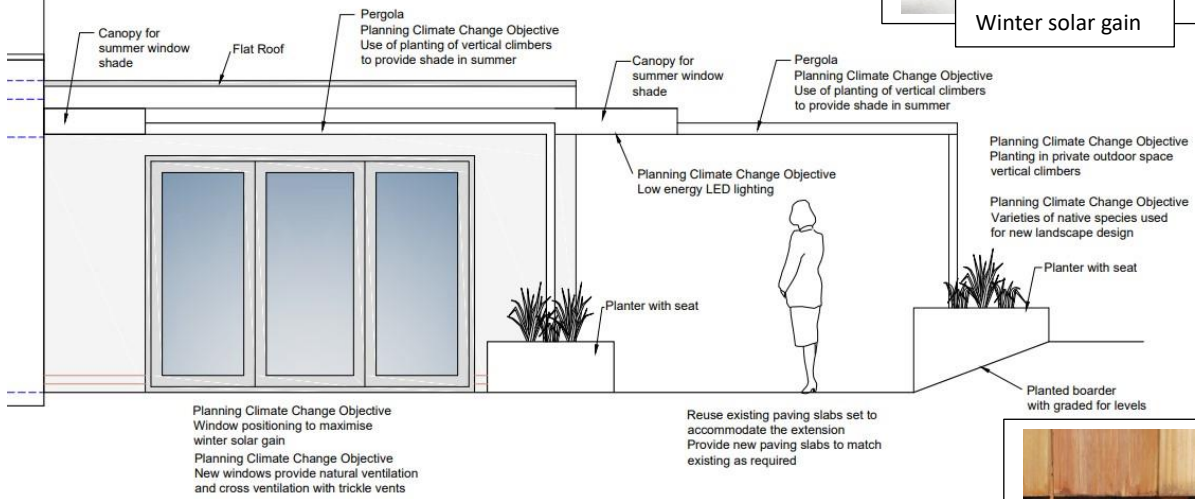
We apply these principles to all our designs appropriately to suit the client's needs and site conditions. Aligning with the planning requirements for climate change adaptations and building regulations updates.



Summer shade



Winter solar gain



Weathered timber shingles

